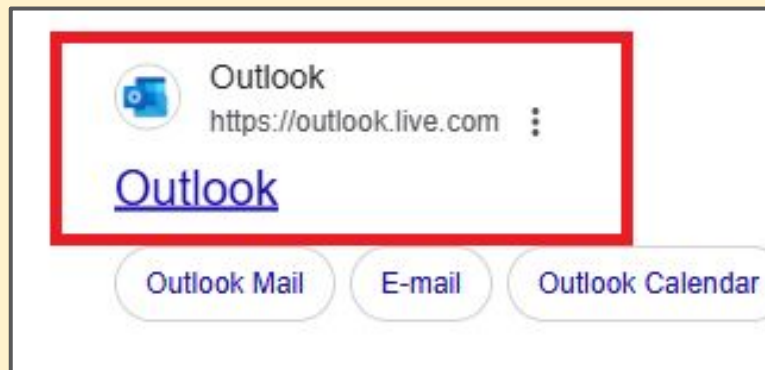
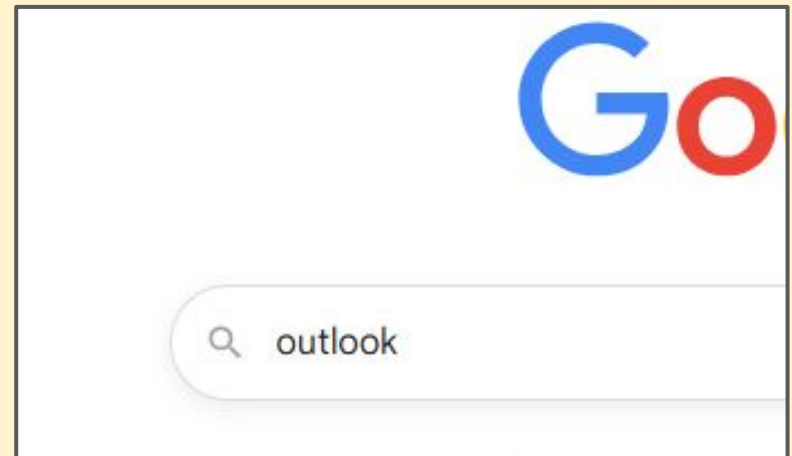


Logging in to email at home

To log in to your school email, you need to use the Outlook website

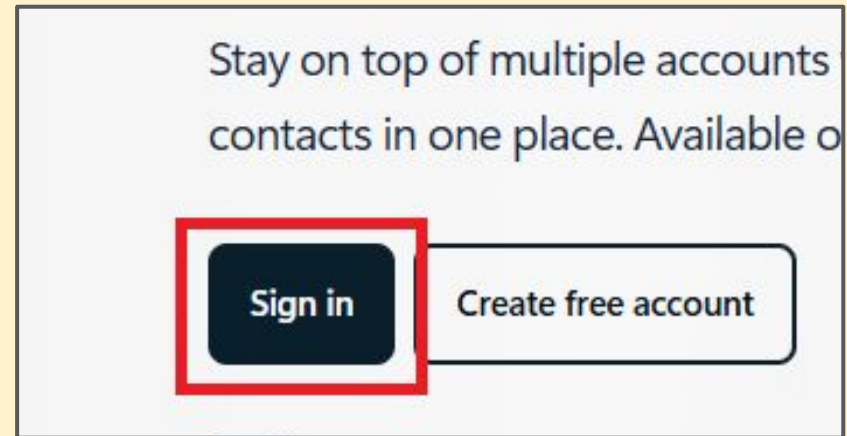
1 Search for **Outlook**...



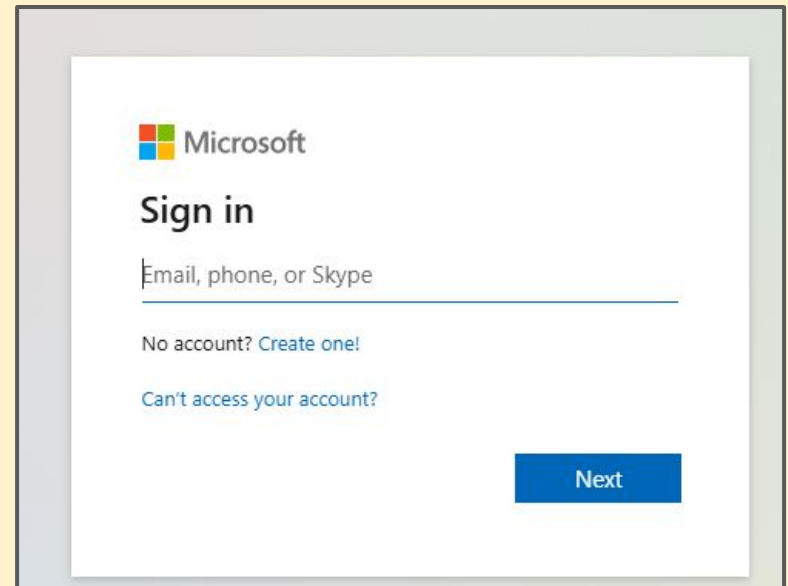
...and click on the link

Logging on to email at home

2 Click to **sign in**



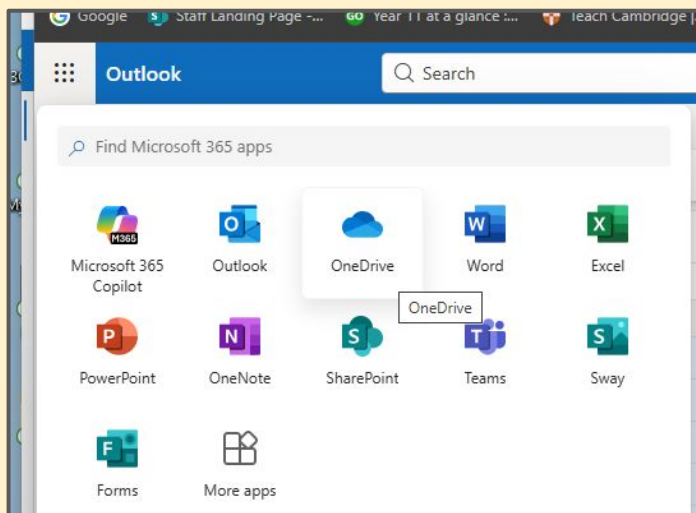
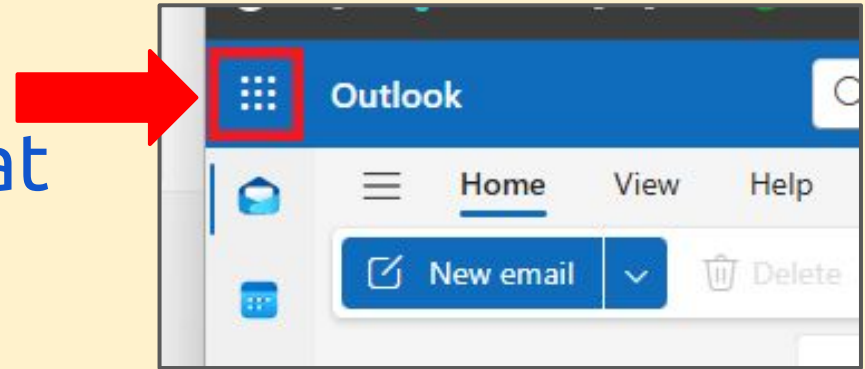
3 Sign in with your school email address and the same password you use at school



Logging on to email at home

This puts you in your email

- 4 To access OneDrive click the **9 squares** at the **top left**



You can access other apps, including Word and PowerPoint