

How computers work

Computers run using **electricity**

How computers work

Computers run using electricity

The electricity powers the **Central Processing Unit (CPU)**

How computers work

Computers run using electricity

The electricity powers the Central Processor Unit (CPU)

Data is processed in the CPU using a system of **switches**. Each switch can be on or off

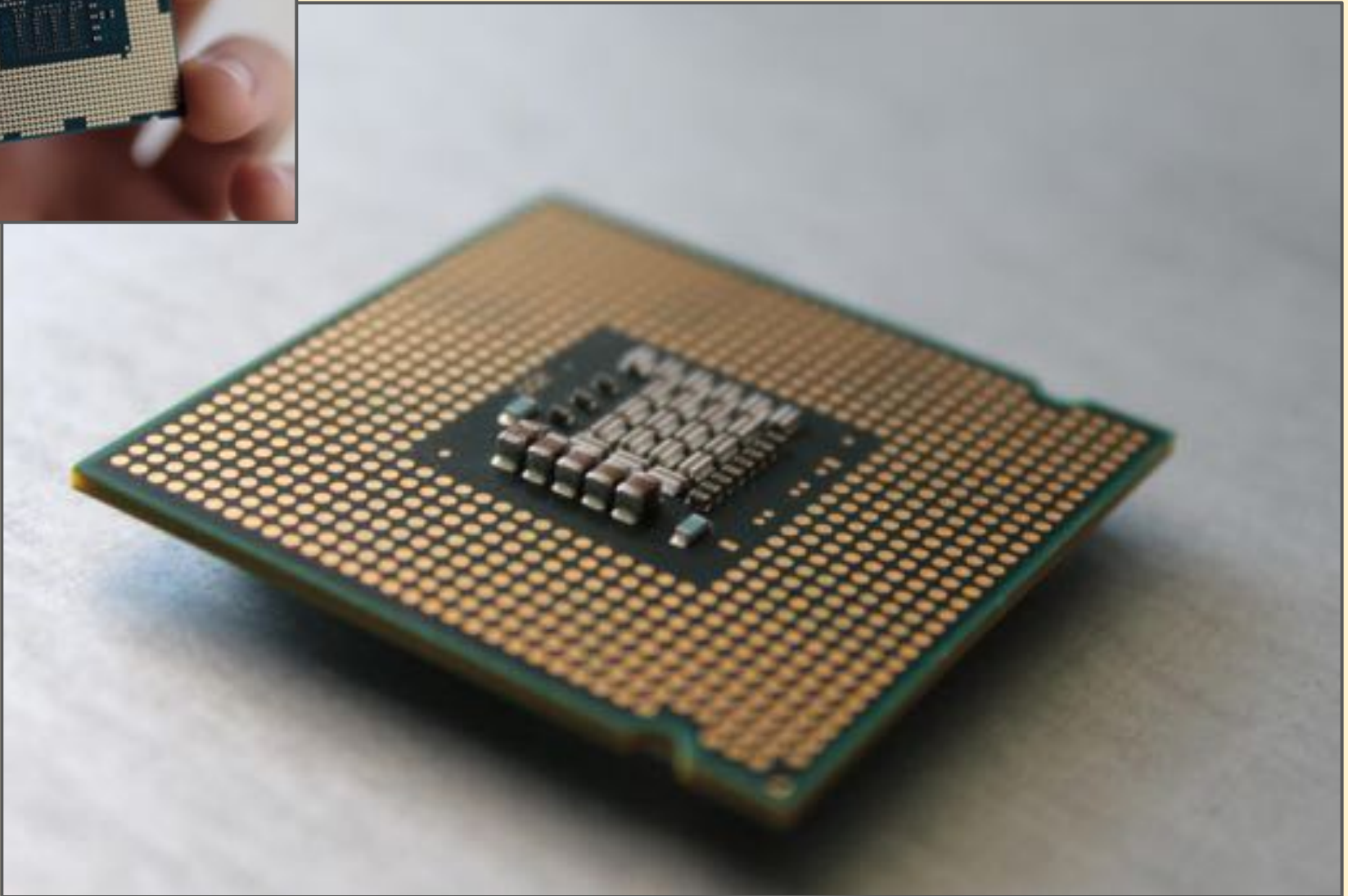
How computers work

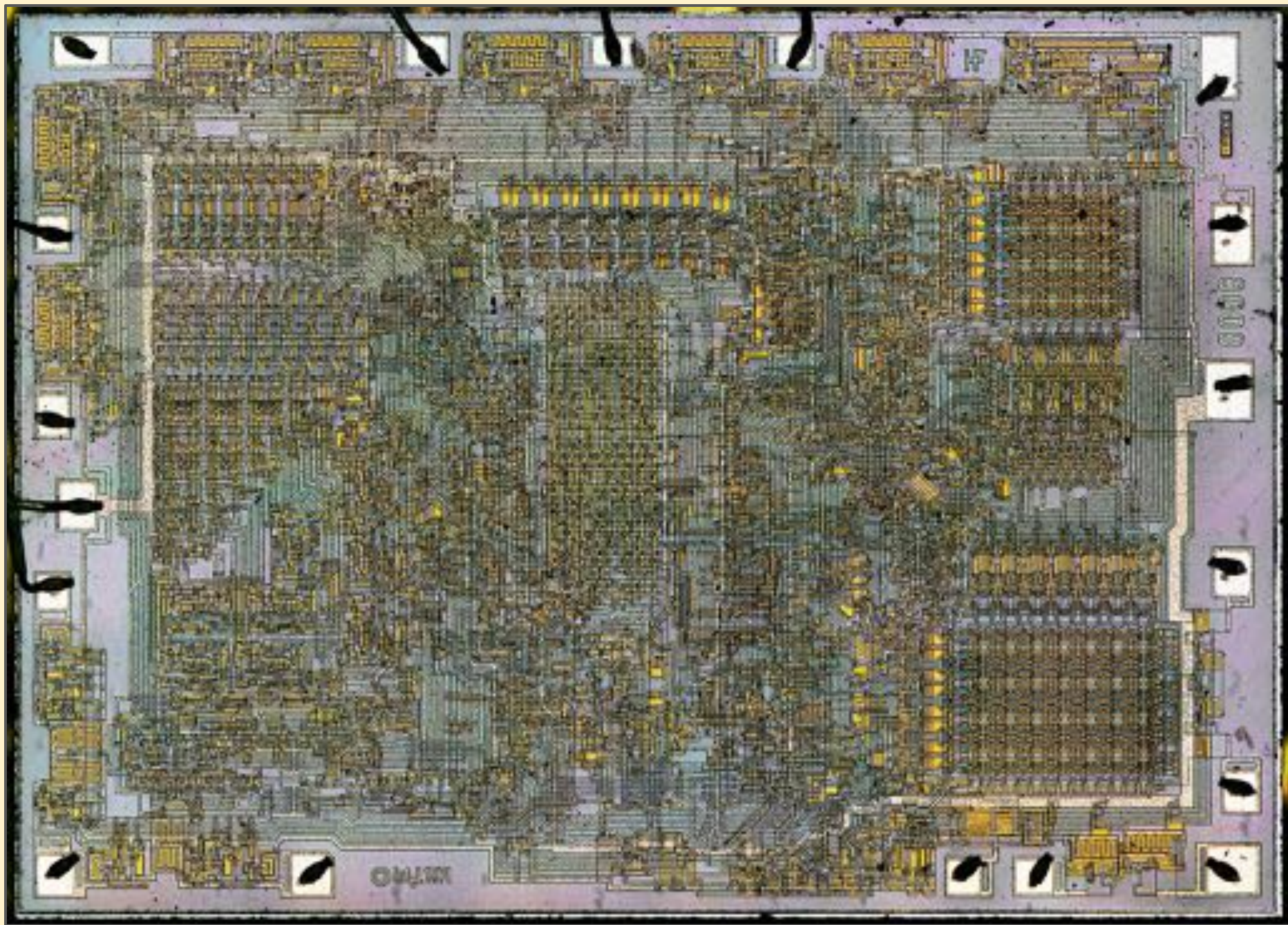
Computers run using electricity

The electricity powers the Central Processor Unit (CPU)

Data is processed in the CPU using a system of switches. Each switch can be on or off

The switches are called **transistors**. They are tiny



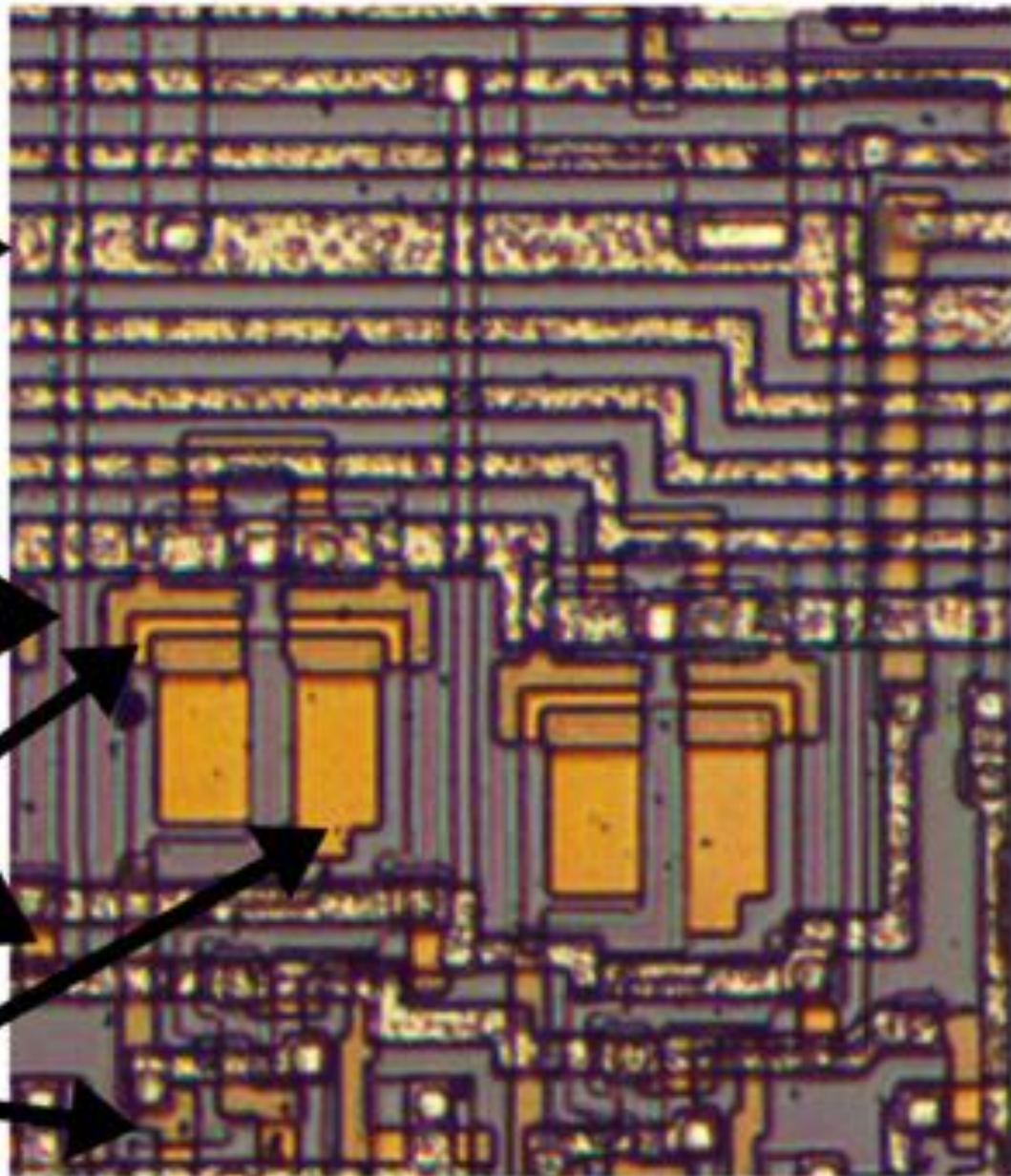


Metal →

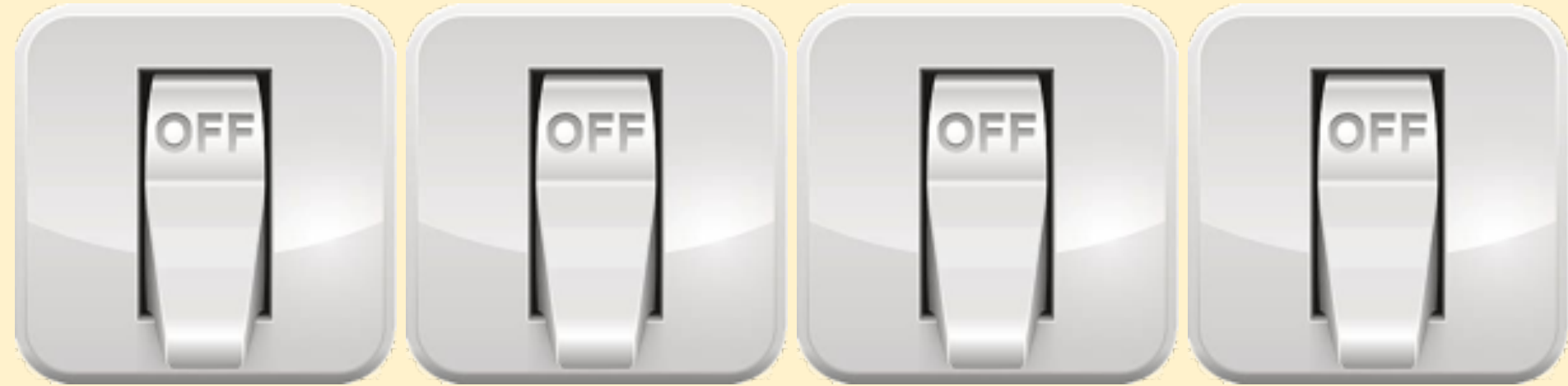
Silicon →

Transistors →

Polysilicon →



Say I have a bank of 4 switches



How many different numbers can I store?

Say I have a bank of 4 switches



How many different numbers can I store?

How many different combinations of ON and OFF are there?





How computers work

This is how computers deal with numbers – using banks of switches.

- each switch can mean 0 or 1.
- combining switches means that bigger numbers can be stored.
- everything that computers store and process has to be reduced down to 0s and 1s – numbers, text, images, video, sound...