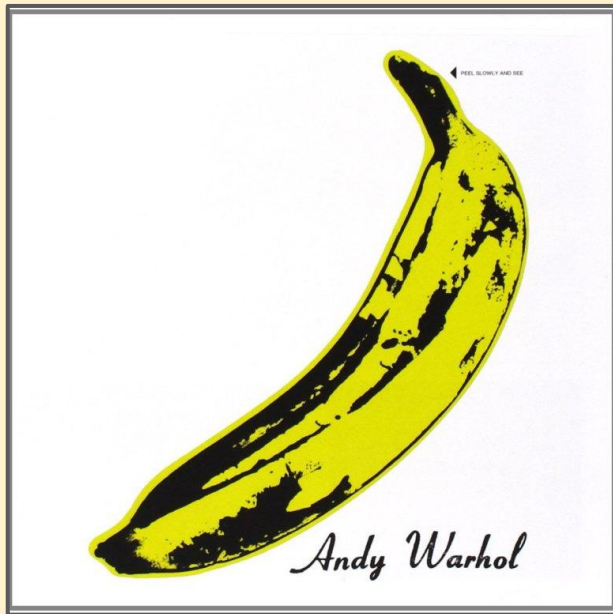
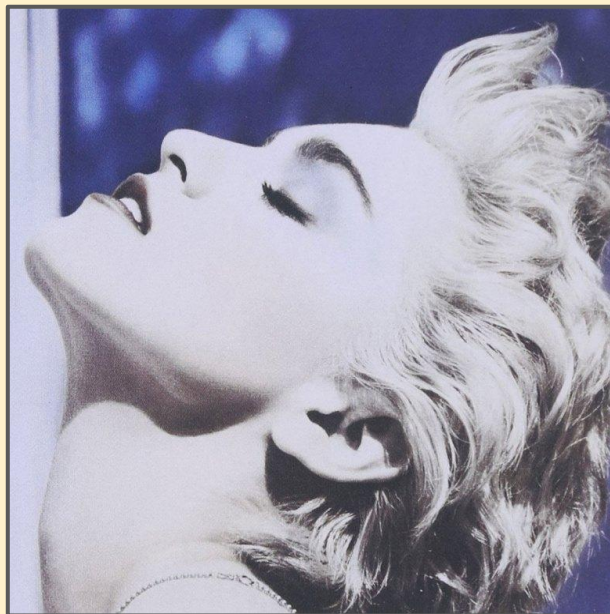
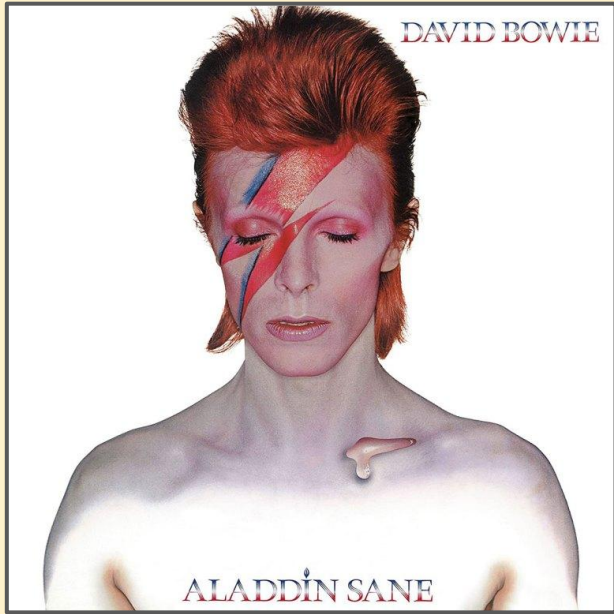


# CD Covers – selective colour

In a list of the 50 “greatest” album covers\*, 23 make really **bold** use of colour

Sometimes this colour is used **selectively**



# Selective colour

Selective colour makes only one part or one colour in a picture coloured



# Selective colour

It can be used to make images more **dynamic** and interesting





# Overlay layers

An **overlay** can be used to add one image on top of another, using partial **transparency**



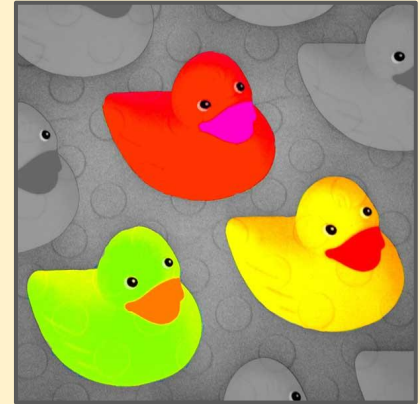


Sweetener

# Selective colour & overlays

To create a “great” album cover using these skills you need to:

- square crop the image
- know how to use the brush tool to pick out colours
- know how to add an overlay layer and edit it
- add text



Album artwork is used in these slides at small sizes for educational use only.  
No claim on copyright is made.