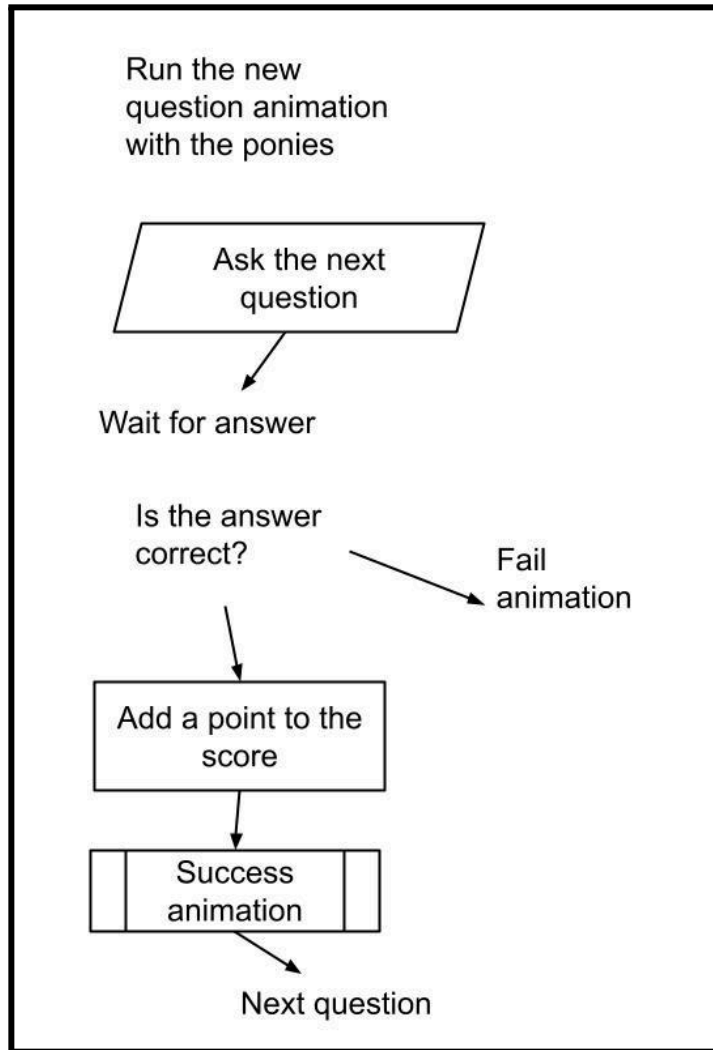


Team Pony is a new animated television programme which is in development. It is aimed at young children aged 5 to 8 and deals with the adventures of a series of cartoon ponies.

A computer game is going to be produced to help market Team Pony. It will test children's literacy and numeracy.

A flowchart has been produced to help a games programmer to create part of the game. This is shown in Figure 1

Figure 1



(a) Improve the effectiveness of the **flowchart** for use by the **games programmer**.

The flowchart has been inserted into the answer space for you to use in your response.

Marks will be awarded for:

- Relevant components and conventions used
- Layout
- Annotations that explain how the improvements help the **games programmer** in their role

