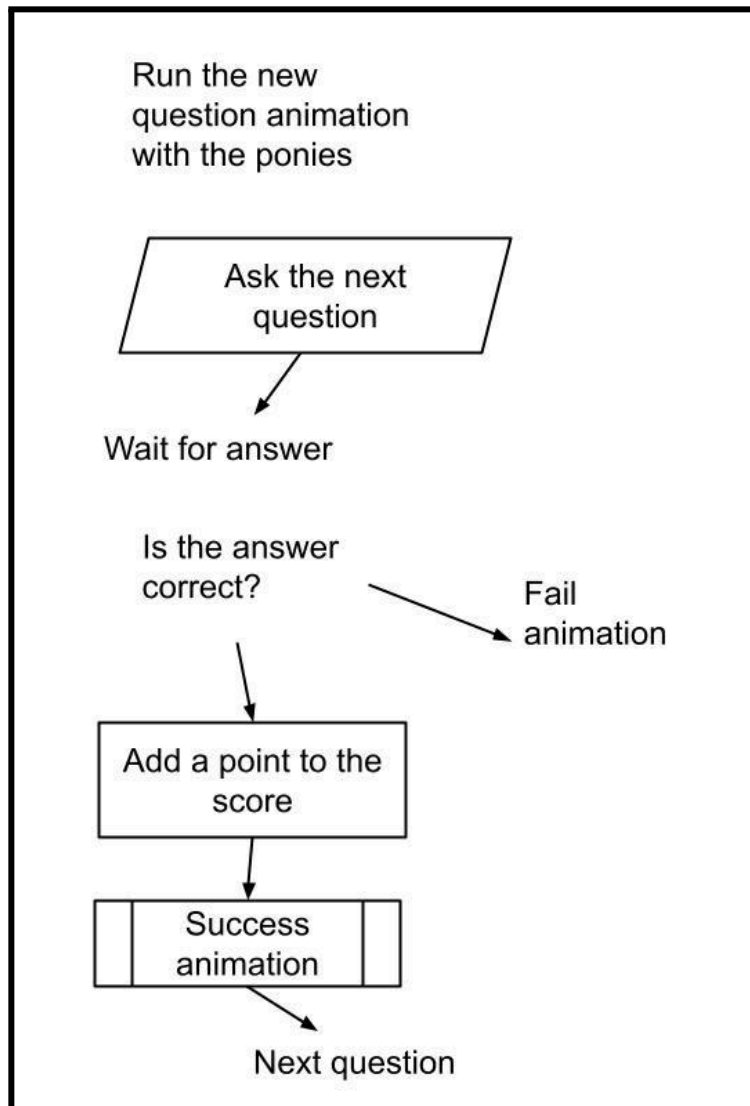


Team Pony is a new animated television programme which is in development. It is aimed at young children aged 5 to 8 and deals with the adventures of a series of cartoon ponies.

A computer game is going to be produced to help market Team Pony. It will test children's literacy and numeracy.

A flowchart has been produced to help a games programmer to create part of the game. This is shown in Figure 1

Figure 1



(a) Discuss the suitability of the **flowchart** for use by the **games programmer**.

Marks will be awarded for:

- Suggesting changes that improve the **flowchart**
- Explaining how the changes you suggest will improve the effectiveness of the **flowchart** for the **games programmer**

