

Wearable technology

Questions will focus on:

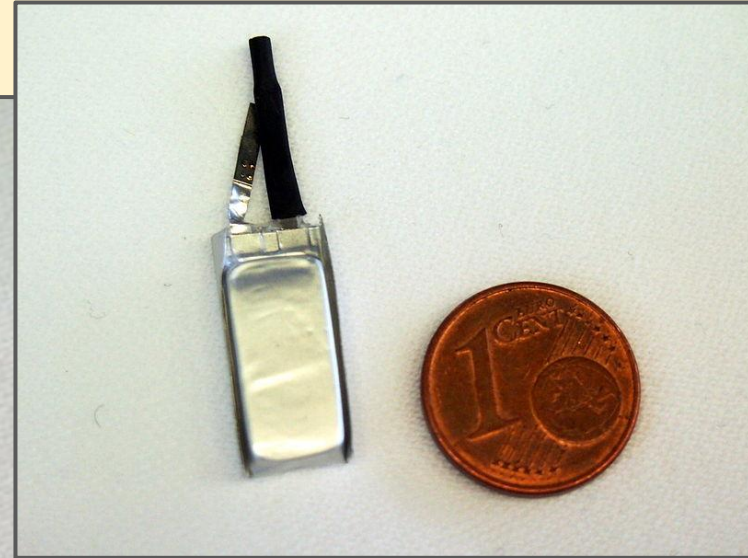
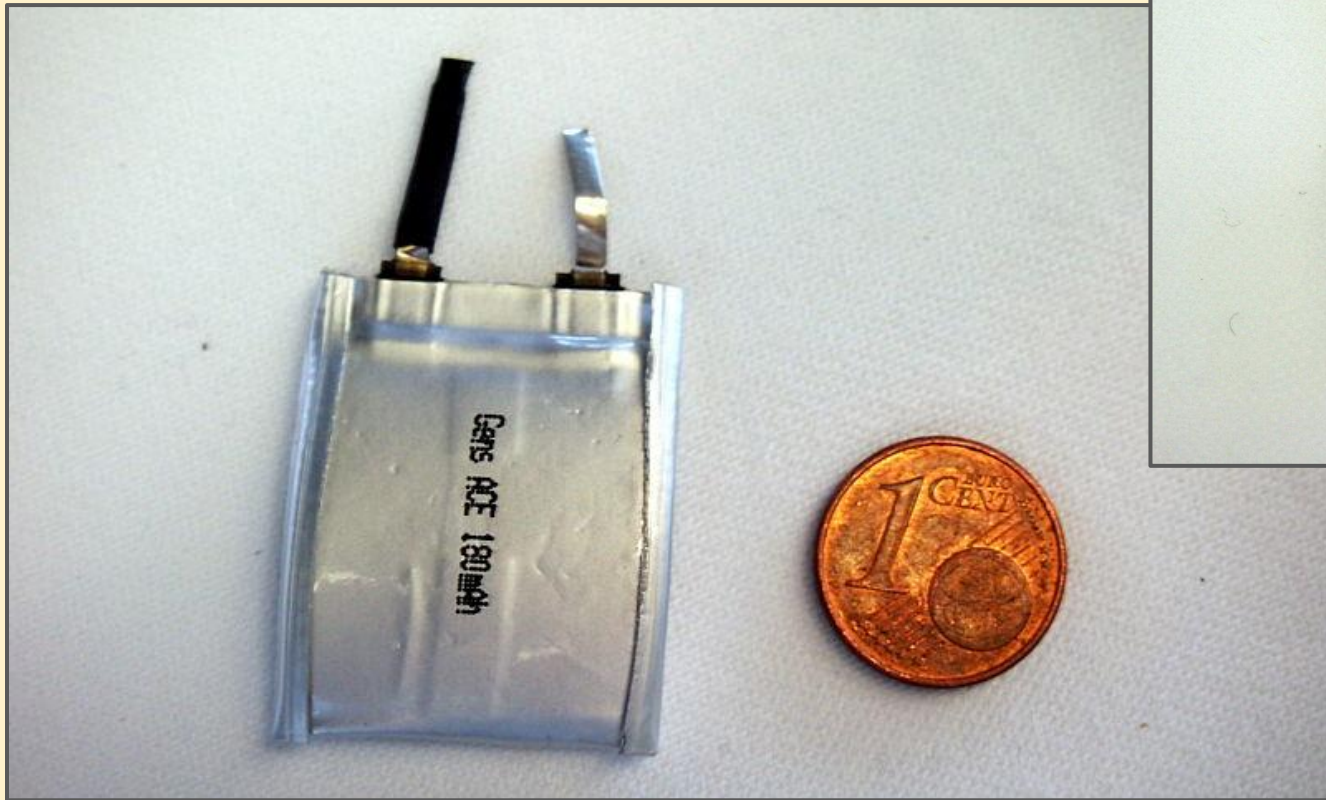
- **Ethical**
- **Environmental**
- **Legal**

Wearable technology

There has been a significant growth in wearable technology

- smaller devices and components
- better battery components and charging tech
- lifestyle changes
- improved network access (4G, 5G etc...)
- desire for increased productivity

Wearable technology



Battery miniaturisation

Wearable technology



What type of network?

Wearable technology



What type of network?

Wearable technology



What?

Wearable technology



Used as a gesture control device

Wearable technology



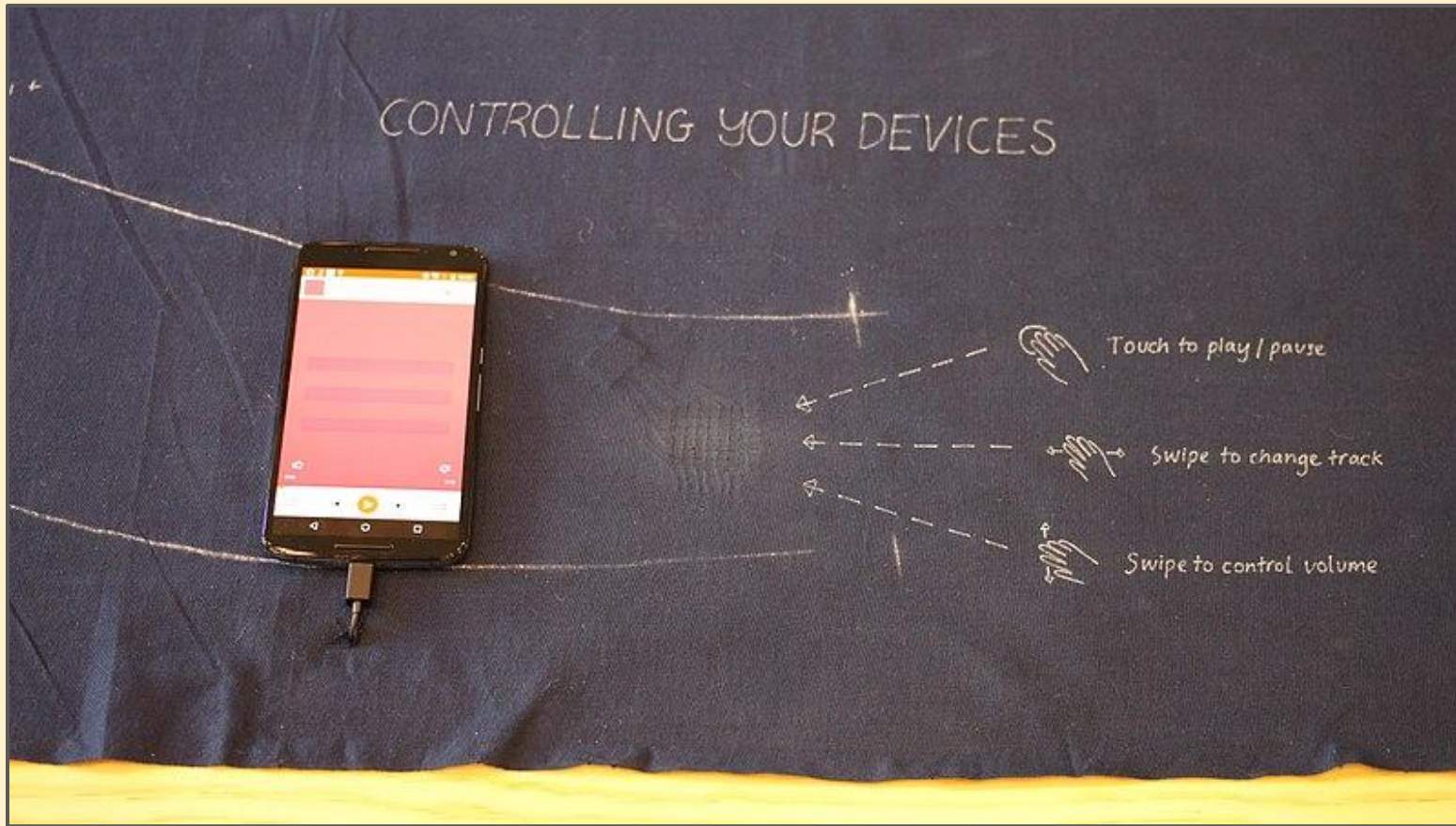
What type of issues?

Wearable technology



Crash sensor - can send SOS message with GPS coordinates

Wearable technology



Project Jacquard - all sorts of potential devices

Wearable technology

Personal alarms and security systems (telecare) are devices that call for help if you, or someone you know, falls or has a problem at home.

They range from basic alarms to intercom systems that allow family members to see who's knocking at your door.

For example, they can be triggered if:

- you fall over or out of bed
- you have a fit
- you wander off or get lost
- the room is too hot or too cold

Wearable technology

Key questions:

- What sort of devices
- Reasons for growth
- Pros and Cons
- **EEL**