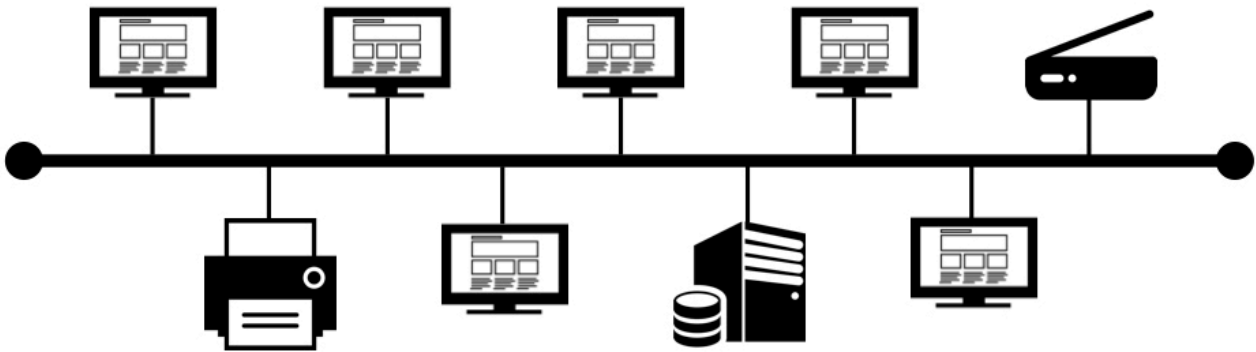


Network Topologies Activities

Activity 1:

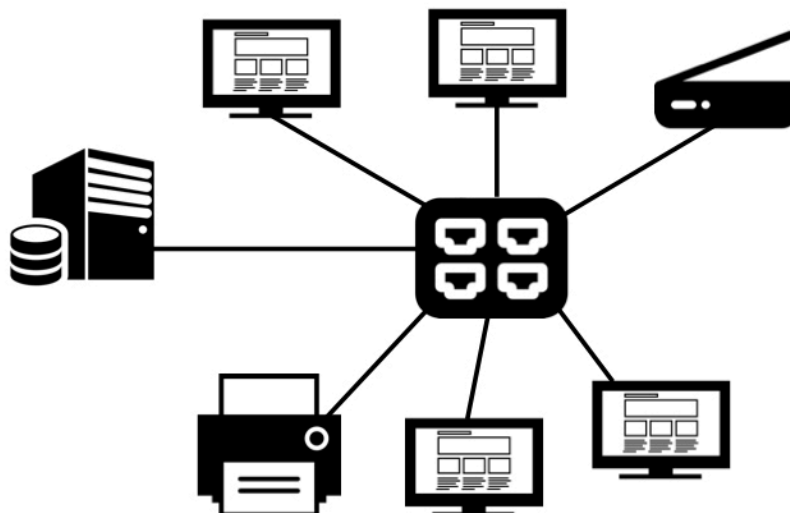
- Define the term **network topology**
- Describe** the differences between a bus network topology and a star network topology
- Give two advantages of using a bus topology
- Label the diagram of a bus topology below (3 marks)



Activity 2:

- Give two advantages of using a star topology
- Label the diagram of a star topology below (3 marks)

Note: in an exam you may need to be able to draw the two topologies from memory



Activity 3:

Obidos Travel is a travel agents employing seven customer service agents. They have decided to introduce a computer network using a **star topology** to replace standalone computers.

- Give **two** reasons why a star topology may **not** be the most suitable choice
- Discuss whether Obidos Travel should use a bus or a star network topology (6 marks)