

# Evening Classes Database

---

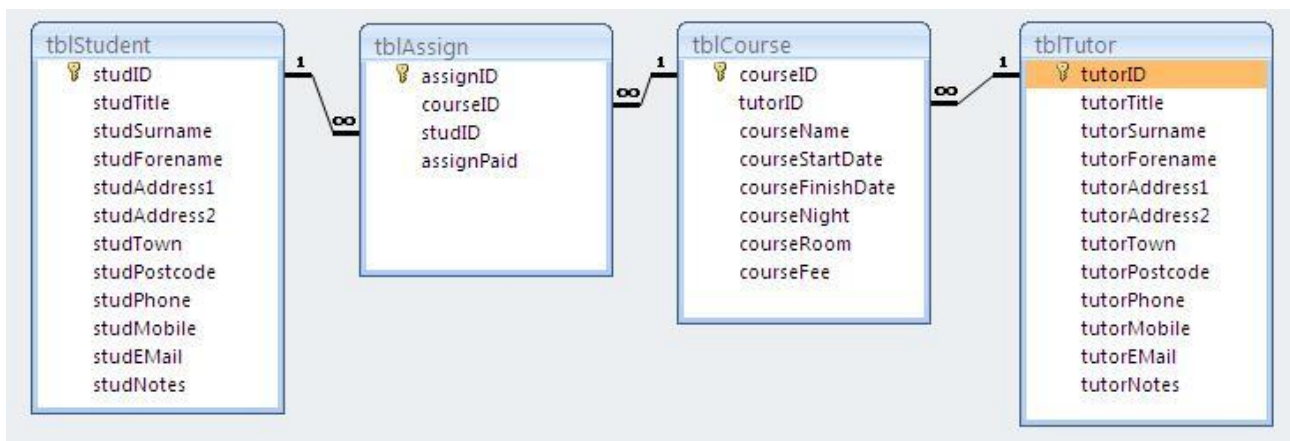
The database is designed to keep track of students doing evening classes at an adult education centre.

The database will be used by admin staff to produce the following outputs:

1. produce lists of tutors with their contact details
2. produce registers for a specified class
3. produce invoices for all students who have not currently paid for their course

NB: the database could, obviously, produce plenty of other things as well. I only want to demonstrate these outputs.

**4 tables are used:**



Each student can do more than one course and each course can be assigned to more than one student. In addition, each tutor can tutor more than one course.

**tblStudent** – holds details of each student. Mostly text fields, with hyperlink used for studEMail and Memo data type for studNotes. Field sizes are set to sensible sorts of values (20 character for surname etc...).

**tblTutor** – holds details of each tutor. Similar to tblStudent.

**tblCourse** – holds details of each course. Start and finish dates are Date/Time data types with a short date format. Fees is currency. Night is validated to be a weeknight using text data type and a suitable validation rule.

**tblAssign** – is a linking table. This links the student to the course. The additional field (assignPaid) is a Yes/No data type to allow administrators to note whether a student has paid their fees for the course.

Details of courses are linked to students by tblAssign. The details of tutors are linked via the tutorID code in tblCourse. This allows students to be linked to tutors for each of their courses.